



# GMT MONTHLY MEMBERSHIP PROGRESS REPORT

Results as of: 4/30/2017

Multiple District 29

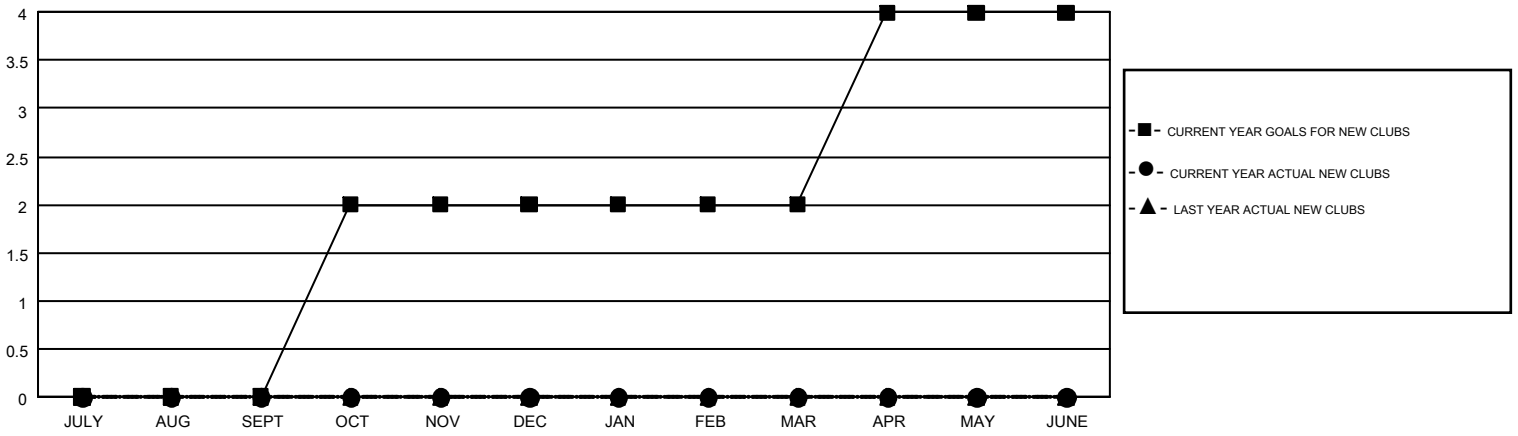
LOCATION: WEST VIRGINIA

GMT: CINDY GREGG

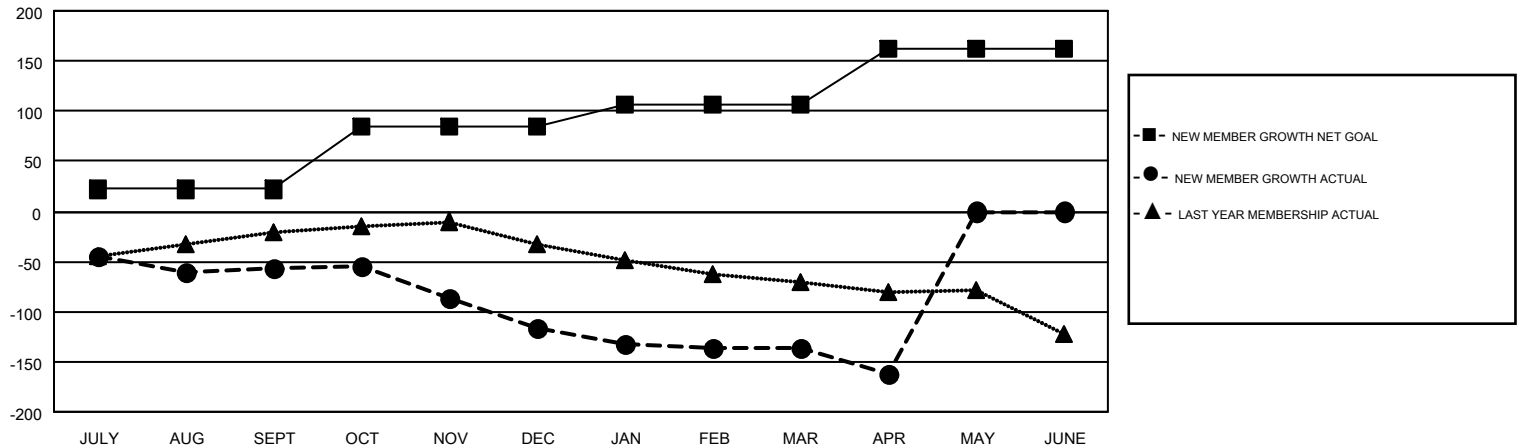
GMT CA 1

| Clubs                 |               |           |               | Members               |  |  |  |
|-----------------------|---------------|-----------|---------------|-----------------------|--|--|--|
| RESULTS FOR 2016-2017 |               |           |               | RESULTS FOR 2016-2017 |  |  |  |
| QUARTER               | NEW CLUB GOAL | NEW CLUBS | DROPPED CLUBS | QUARTER               | NEW MEMBER GROWTH NET GOAL (not reinstated or transfers) | NEW MEMBER GROWTH ACTUAL (not reinstated or transfers) | DROPPED MEMBERS ACTUAL (including transfers) |
| JULY/AUG/SEPT         | 0             | 0         | 0             | JULY/AUG/SEPT         | 22   | 65   | 122  |
| OCT/NOV/DEC           | 2             | 0         | 2             | OCT/NOV/DEC           | 63   | 72   | 131  |
| JAN/FEB/MAR           | 0             | 0         | 1             | JAN/FEB/MAR           | 21   | 97   | 117  |
| APR/MAY/JUNE          | 2             | 0         | 0             | APR/MAY/JUNE          | 57   | 27   | 53   |

GOALS AND ACTUAL NEW CLUBS CUMULATIVE



GOALS AND ACTUAL MEMBERS CUMULATIVE



|                        |   |                                 |                |
|------------------------|---|---------------------------------|----------------|
| DROPPED CLUBS: 3       | 96 CLUBS OF 172 ADDED 1 OR MORE NEW MEMBERS | <u>GENDER DISTRIBUTION</u>      |                |
|                        |   | MALE                            | 2,781 (66.59%) |
|                        |   | FEMALE                          | 1,395 (33.41%) |
| <u>DROPPED MEMBERS</u> |   | TOTAL FAMILY UNIT MEMBERS       | 1,184          |
| DECEASED               | 74  | FAMILY MEMBERS PAYING HALF DUES | 606            |
| CLUB CANCELLED         | 0   |                                 |                |
| OTHER                  | 349   |                                 |                |
| TOTAL                  | 423   |                                 |                |

[CLICK HERE FOR CUMULATIVE MEMBERSHIP DATA](#)